

# Comenius Project

## Living Our Common Ancestry

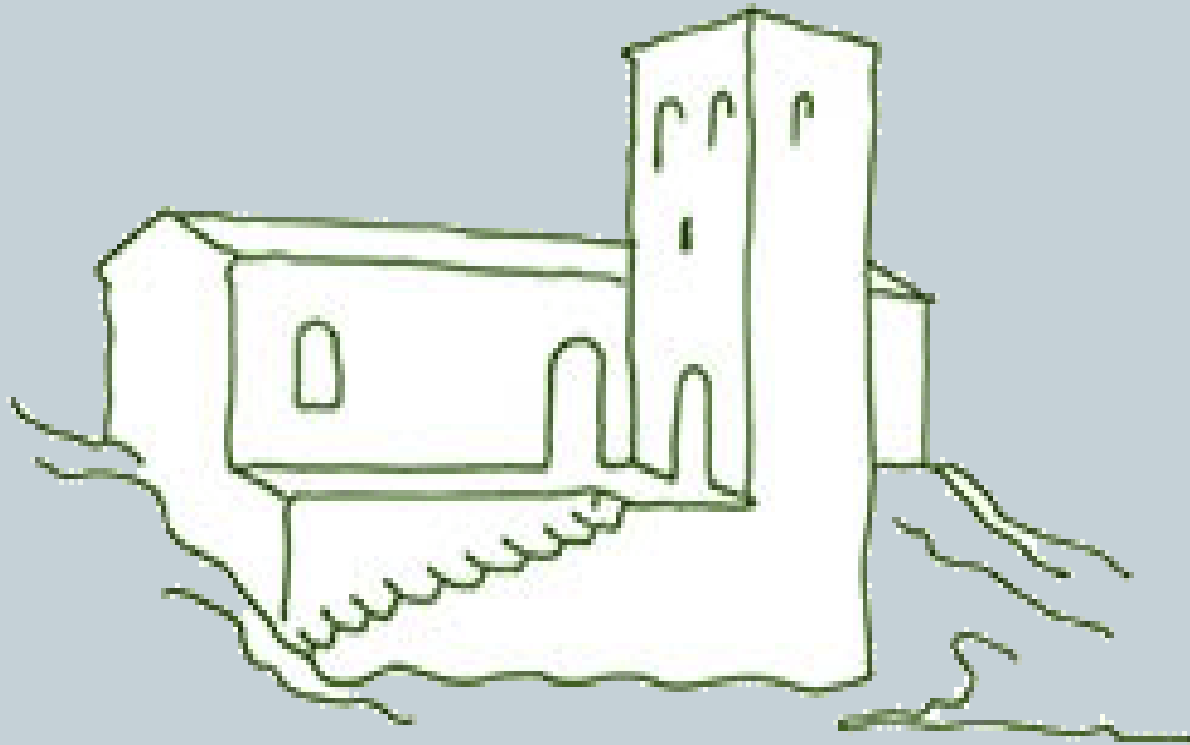


**BYZANTINE HOUSES 9<sup>TH</sup>-13<sup>TH</sup> CENTURIES  
(AND HOUSES IN LATVIA AND ICELAND)**

**THE ART SCHOOL OF GERAKAS  
ATTICA –GREECE  
MAY 2015**

Made by: Anesti Lida & Fragoulis Konstantinos

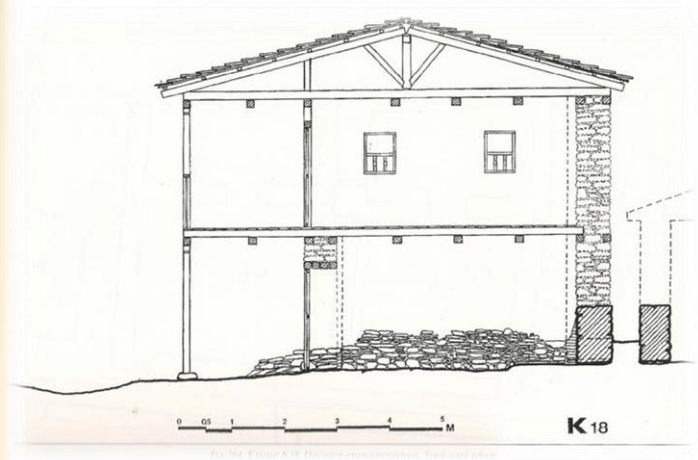
# BYZANTINE HOUSES 9<sup>th</sup>-13<sup>th</sup> century



# Houses



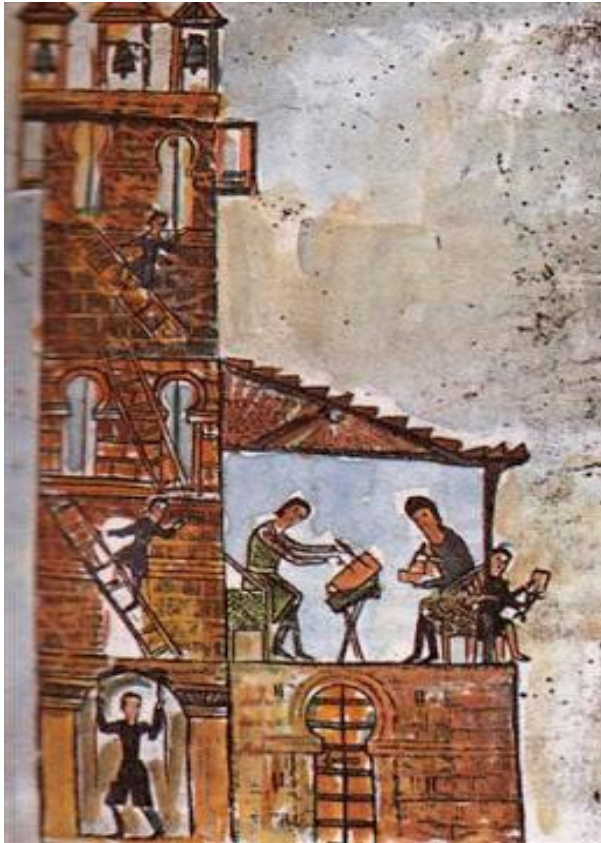
Most people lived in small two floor houses



# Houses in big cities



In big cities, houses sometimes had more than 3 or 4 floors ....





...and they were built very close to one another.



# Interior architecture



Between 9<sup>th</sup> and 13<sup>th</sup> century, the main room of the house was triklinos, i.e. the room where the home owners welcomed their guests. (τρίκλινος).

Around it were the men's, women's and children's rooms and also the dining room and hygiene spaces.





# Roof



Roofs were flat or sloping, made from tiles



Monemvassia –Peloponnese  
6<sup>th</sup>-18<sup>th</sup> century

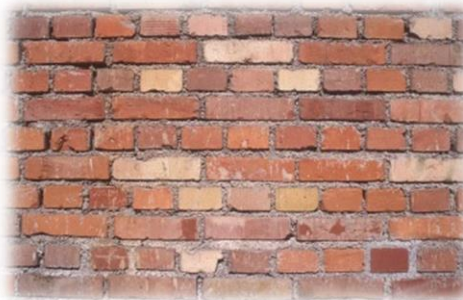
# Materials



Houses were usually made with cheap materials such as rectangular stones, bricks and wood.



Rectangular stones



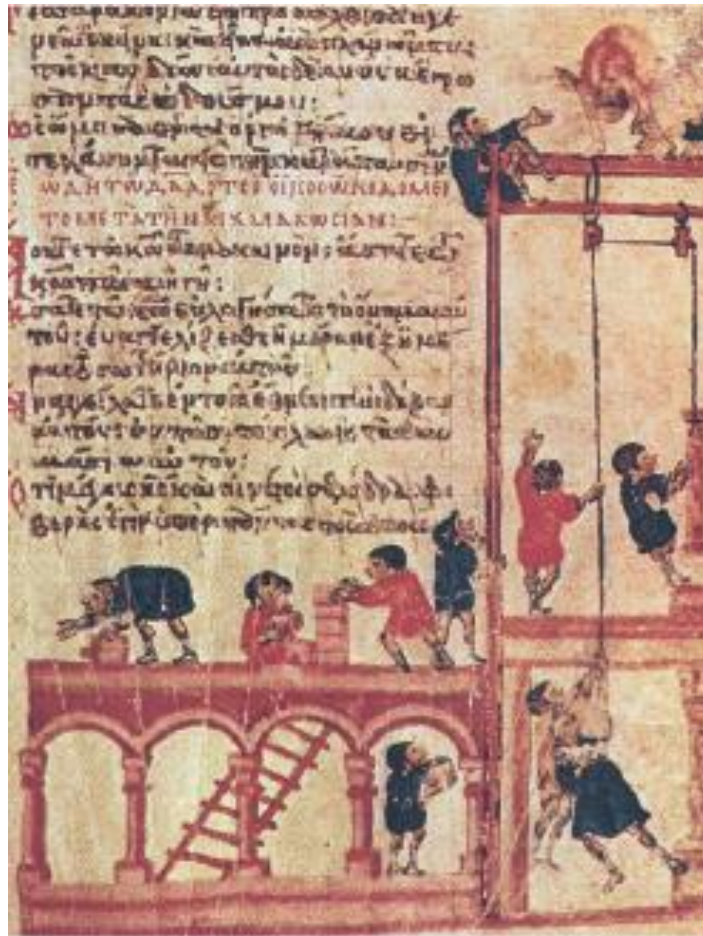
Bricks



Beech wood

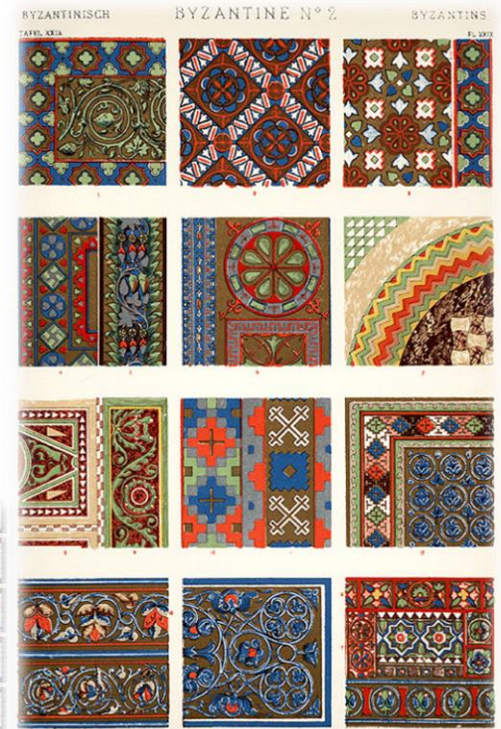


The Byzantines also used more expensive materials such as **marble**



# House decoration

Houses had a balcony and yards surrounded with columns or gardens. Mosaics and wall paintings completed their decoration.

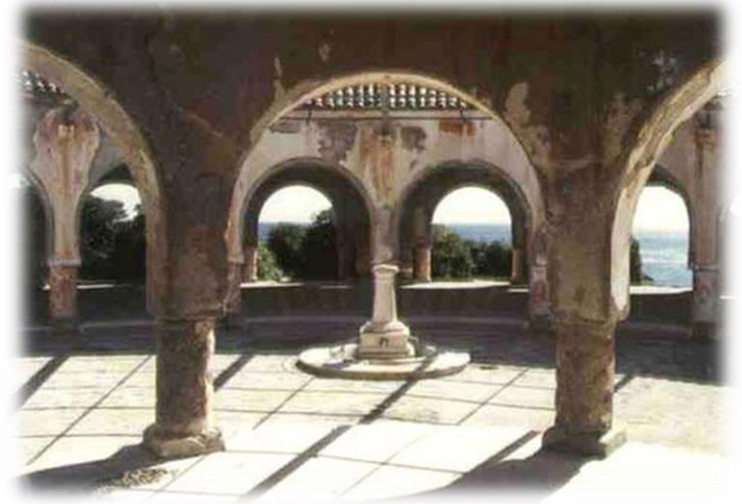




# The yard

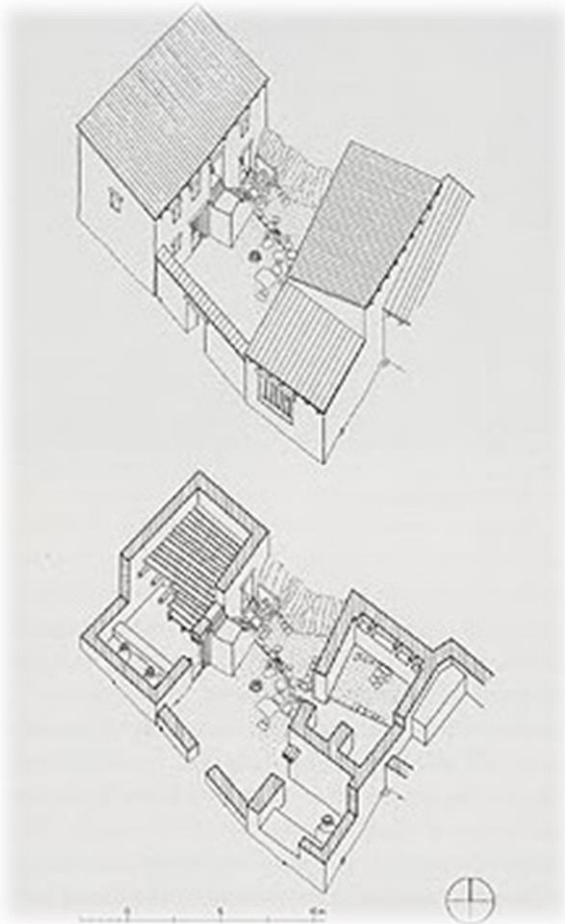


In the most common type of house, there were rooms around an open yard, where there usually was a well or a furnace.





# Reproduction of a Byzantine house



crafted by:  
Anesti Lida  
Karagiorgos Panagiotis  
Xenia Angeliki  
Sofronis Stavros  
Fragoulis Konstantinos

# The model house





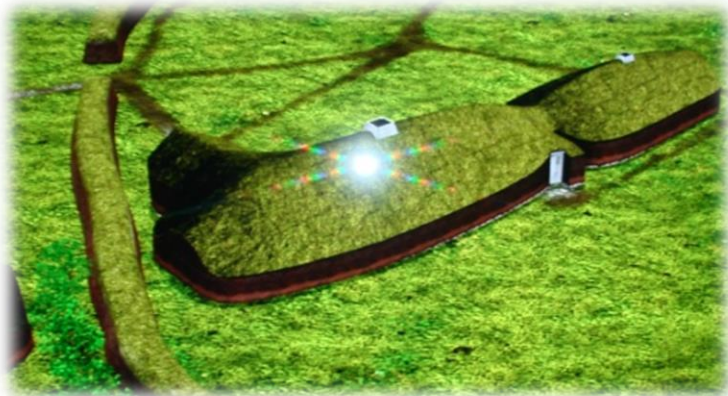
## Houses (9<sup>th</sup>-13<sup>th</sup> century):

1. Greece (reproduction )    2. Iceland(Reykjavik 871+/-1 museum)

1.



2.





### 3. Latvia (open air museum): 12<sup>th</sup> century houses



# Living our common ancestry...





# Tower houses in the area of Mani in the Peloponnese, Greece





The Athens eye hospital is based mainly on 12<sup>th</sup> century architecture and was built in 1843.



This is the building in its first form



This is the building in its present form

# Sources



- ❖ <http://exploringbyzantium.gr/>
- ❖ [www.antoine-helbert.com/.../byzance-archi...](http://www.antoine-helbert.com/.../byzance-archi...)
- ❖ Reykjavik 871+/-2 The settlement exhibition.
- ❖ Den arkeologiska museumparken i Araisí.
- ❖ <http://users.uoa.gr/~nektar/orthodoxy/tributes/elkomenos/architecture.htm>
- ❖ Μεσαιωνική και Νεότερη Ιστορία Β' Γυμνασίου
- ❖ Buzzfeed “31 dream houses in the woods”
- ❖ Google images

A decorative horizontal band featuring a mosaic pattern with green, brown, and white tones, serving as a background for the 'THE END' text.

# THE END...